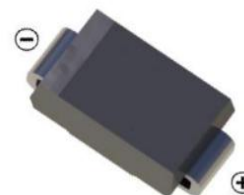


**SMB Fast Recovery Diode 快恢复二极管**

■ **Features 特点**

Built-in strain relief 内应力释放  
Fast Recovery time 快恢复时间  
Surface mount device 表面贴装器件  
Case 封装:SMB(DO-214AA)



■ **Maximum Rating 最大额定值**

( $T_A=25^{\circ}\text{C}$  unless otherwise noted 如无特殊说明, 温度为  $25^{\circ}\text{C}$ )

Characteristic 特性参数	Symbol 符号	RS5 AB	RS5 BB	RS5 DB	RS5 GB	RS5 JB	RS5 KB	RS5 MB	Unit 单位
Marking 印字		RS 5A	RS 5B	RS 5D	RS 5G	RS 5J	RS 5K	RS 5M	
Repetitive Peak Reverse Voltage 重复峰值反向电压	$V_{RRM}$	50	100	200	400	600	800	1000	V
DC Reverse Voltage 直流反向电压	$V_R$	50	100	200	400	600	800	1000	V
RMS Reverse Voltage 反向电压均方根值	$V_{R(RMS)}$	35	70	140	280	420	560	700	V
Forward Rectified Current 正向整流电流	$I_F$	5							A
Peak Surge Current 峰值浪涌电流	$I_{FSM}$	150							A
Thermal Resistance J-A 结到环境热阻	$R_{\theta JA}$	12.5							$^{\circ}\text{C}/\text{W}$
Junction/Storage Temperature 结温/储藏温度	$T_J, T_{stg}$	-50to+150 $^{\circ}\text{C}$							$^{\circ}\text{C}$

■ **Electrical Characteristics 电特性**

( $T_A=25^{\circ}\text{C}$  unless otherwise noted 如无特殊说明, 温度为  $25^{\circ}\text{C}$ )

Characteristic 特性参数	Symbol 符号	RS5AB-RS5GB	RS5JB	RS5KB-RS5MB	Unit 单位	Condition 条件
Forward Voltage 正向电压	$V_F$	1.3			V	$I_F=5\text{A}$
Reverse Current 反向电流	$I_R$	5( $T_A=25^{\circ}\text{C}$ ) 300( $T_A=125^{\circ}\text{C}$ )			$\mu\text{A}$	$V_R=V_{RRM}$
Reverse Recovery Time 反向恢复时间	$T_{rr}$	150	250	500	nS	$I_F=0.5\text{A}, I_R=1\text{A}$ $I_{rr}=0.25\text{A}$
Junction Capacitance 结电容	$C_J$	70			pF	$V_R=4\text{V}, f=1\text{MHz}$

■ Typical Characteristic Curve 典型特性曲线

FIG.1-TYPICAL FORWARD CHARACTERISTICS

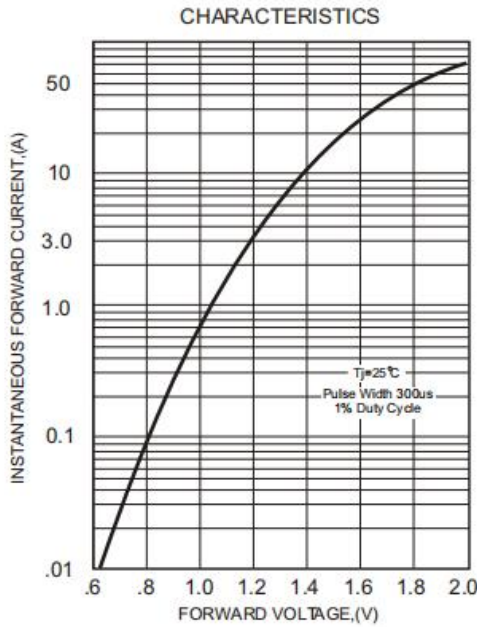


FIG.2-TYPICAL FORWARD CURRENT DERATING CURVE

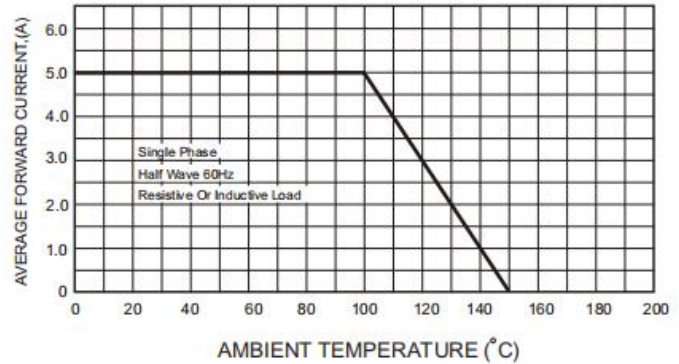


FIG.4-MAXIMUM NON-REPETITIVE FORWARD SURGE CURRENT

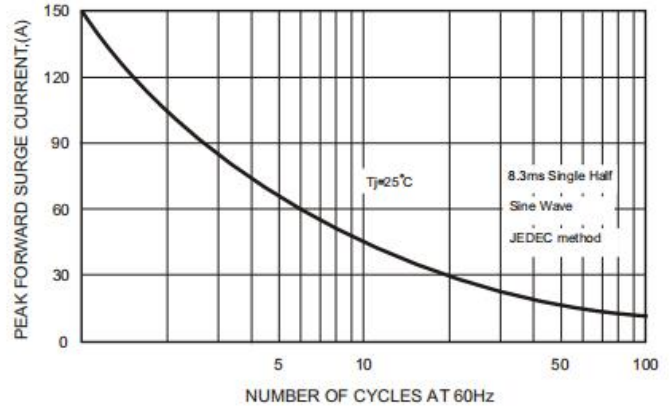
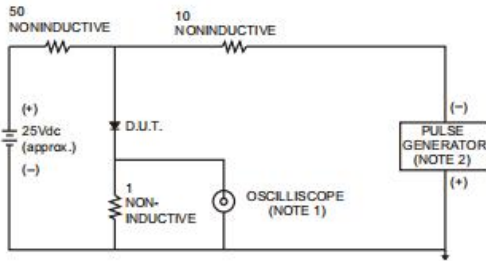


FIG.3- TEST CIRCUIT DIAGRAM AND REVERSE RECOVERY TIME CHARACTERISTICS



NOTES: 1. Rise Time= 7ns max., Input Impedance= 1 megohm, 22pF.  
2. Rise Time= 10ns max., Source Impedance= 50 ohms.

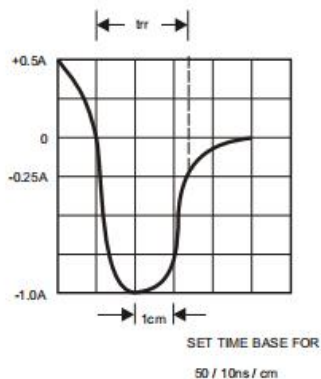
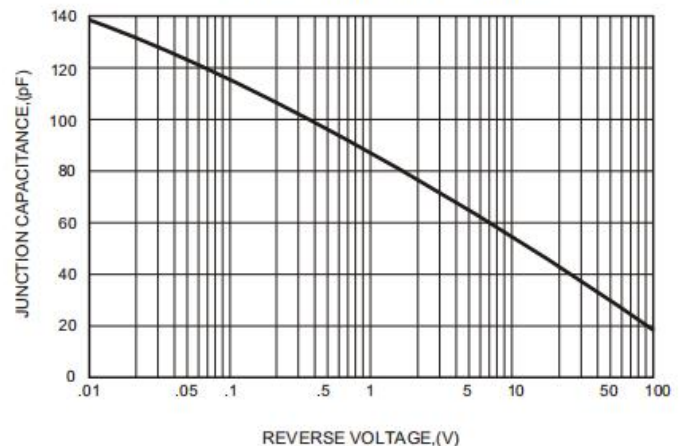
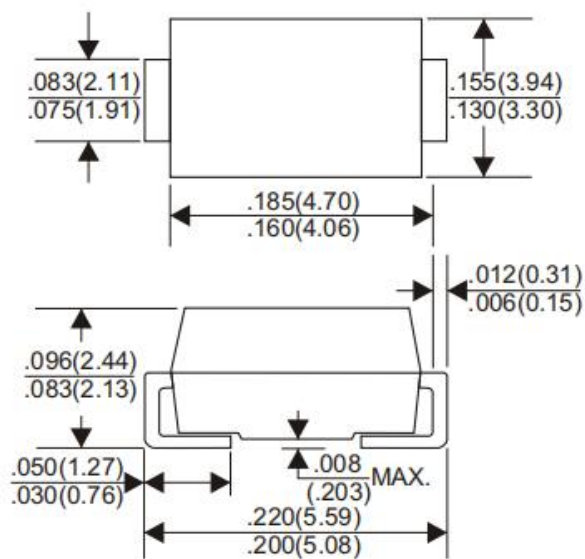


FIG.5-TYPICAL JUNCTION CAPACITANCE



■Dimension 外形封装尺寸

DO-214AA(SMB)



Dimensions in inches and (millimeters)