

SOD-323 Surface Mounted Zener Diode 表面贴装稳压二极管

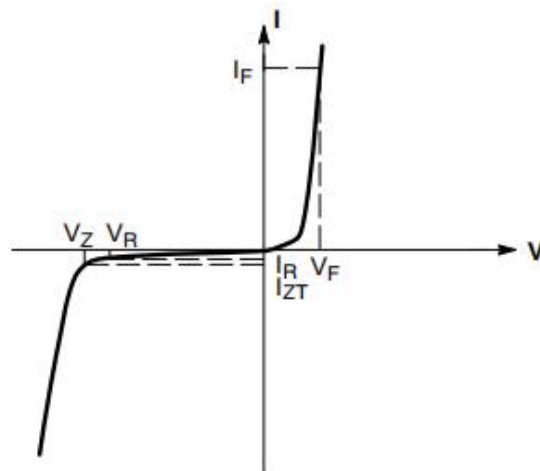
■SOD-323 Internal Configuration 内部结构



SOD-323

■Features 特点

Characteristic 特性参数	SymBSol 符号	Max 最大值	Unit 单位
Power dissipation 耗散功率	PD (Ta=25°C)	300	mW
Forward Current 正向电流	I _F	250	mA
Reverse Zener Current 反向稳压电流	I _{ZRM}	188-11.6	mA
Forward Voltage 正向电压	V _F (@ I _F =10mA)	0.9	V
Reverse Voltage 反向电压	V _Z	2.4-39	V
Junction and Storage Temperature 结温和储藏温度	T _J , T _{stg}	125°C, -55to+125°C	



■Electrical Characteristics 电特性

(T_A=25°C unless otherwise noted 如无特殊说明, 温度为 25°C)

NumBSer	V _Z (V)@I _Z			Z _Z (Ω) @I _Z	I _Z (mA)	Z _{ZK} (Ω) @I _{ZK}	I _{ZK} (mA)	I _R (uA) @V _R	V _R (V)	I _{ZRM} (mA)	Code
	Nom.	Min.	Max.								
MMSZ5221BS	2.4	2.28	2.52	30	20	1200	0.25	100	1	188	C1
MMSZ5222BS	2.5	2.38	2.63	30	20	1250	0.25	100	1	180	C2
MMSZ5223BS	2.7	2.57	2.84	30	20	1300	0.25	75	1	167	C3
MMSZ5224BS	2.8	2.66	2.94	30	20	1400	0.25	75	1	160	C4
MMSZ5225BS	3	2.85	3.15	30	20	1600	0.25	50	1	150	C5
MMSZ5226BS	3.3	3.14	3.47	28	20	1600	0.25	25	1	138	G1
MMSZ5227BS	3.6	3.42	3.78	24	20	1700	0.25	15	1	126	G2
MMSZ5228BS	3.9	3.71	4.1	23	20	1900	0.25	10	1	115	G3
MMSZ5229BS	4.3	4.09	4.52	22	20	2000	0.25	5	1	106	G4
MMSZ5230BS	4.7	4.47	4.94	19	20	1900	0.25	5	2	97	G5
MMSZ5231BS	5.1	4.85	5.36	17	20	1600	0.25	5	2	89	E1
MMSZ5232BS	5.6	5.32	5.88	11	20	1600	0.25	5	3	81	E2
MMSZ5233BS	6.0	5.7	6.3	7	20	1600	0.25	5	3.5	77	E3
MMSZ5234BS	6.2	5.89	6.51	7	20	1000	0.25	5	4	73	E4
MMSZ5235BS	6.8	6.46	7.14	5	20	750	0.25	3	5	67	E5
MMSZ5236BS	7.5	7.13	7.88	6	20	500	0.25	3	6	61	F1
MMSZ5237BS	8.2	7.79	8.61	8	20	500	0.25	3	6	55	F2
MMSZ5238BS	8.7	8.27	9.13	8	20	600	0.25	3	6	52	F3
MMSZ5239BS	9.1	8.65	9.56	10	20	600	0.25	3	6.5	50	F4
MMSZ5240BS	10	9.5	10.5	17	20	600	0.25	3	8	45	F5
MMSZ5241BS	11	10.45	11.55	22	20	600	0.25	3	8.4	41	H1
MMSZ5242BS	12	11.4	12.6	30	20	600	0.25	2	9.1	38	H2
MMSZ5243BS	13	12.35	13.65	13	9.5	600	0.25	1	9.9	35	H3
MMSZ5244BS	14	13.3	14.7	15	9	600	0.25	1	10.5	33	H4
MMSZ5245BS	15	14.25	15.75	16	8.5	600	0.25	0.5	11	30	H5
MMSZ5246BS	16	15.2	16.8	17	7.8	600	0.25	0.1	12	28	J1
MMSZ5247BS	17	16.15	17.85	19	7.4	600	0.25	0.1	13	26	J2
MMSZ5248BS	18	17.1	18.9	21	7	600	0.25	0.1	14	25	J3
MMSZ5249BS	19	18.05	19.95	23	6.6	600	0.25	0.1	14	24	J4
MMSZ5250BS	20	19	21	25	6.2	600	0.25	0.1	15	23	J5
MMSZ5251BS	22	20.9	23.1	29	5.6	600	0.25	0.1	17	21	K1
MMSZ5252BS	24	22.8	25.2	33	5.2	600	0.25	0.1	18	19.1	K2
MMSZ5253BS	25	23.75	26.25	35	5	600	0.25	0.1	19	17.9	K3
MMSZ5254BS	27	25.65	28.35	41	5	600	0.25	0.1	21	16.8	K4
MMSZ5255BS	28	26.6	29.4	44	4.5	600	0.25	0.1	21	16.2	K5
MMSZ5256BS	30	28.5	31.5	49	4.2	600	0.25	0.1	23	15.1	M1
MMSZ5257BS	33	31.35	34.65	58	3.8	700	0.25	0.1	25	13.8	M2
MMSZ5258BS	36	34.2	37.8	70	3.4	700	0.25	0.1	27	12.6	M3
MMSZ5259BS	39	37.05	40.95	80	3.2	800	0.25	0.1	30	11.6	M4

■ Typical Characteristic Curve 典型特性曲线

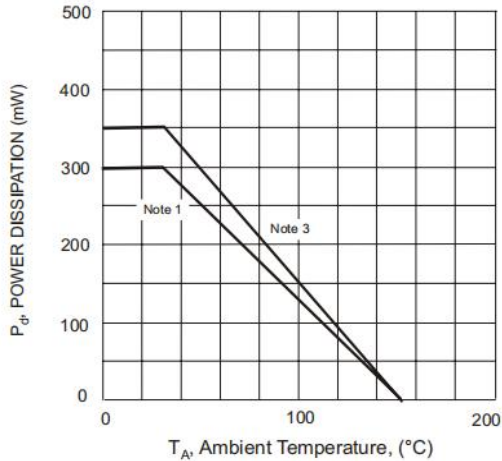


Figure 1: Power Derating Curve

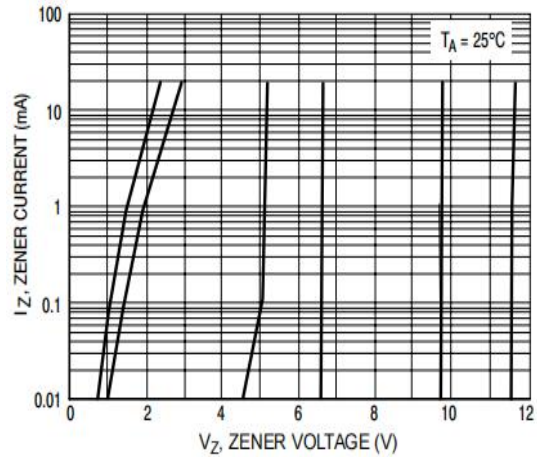


Figure 2: Zener Breakdown Characteristics

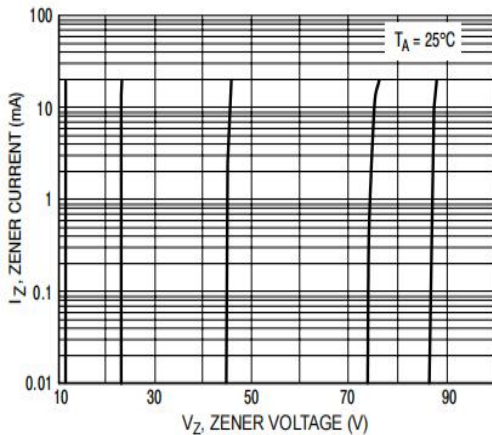


Figure 3: Zener Breakdown Characteristics

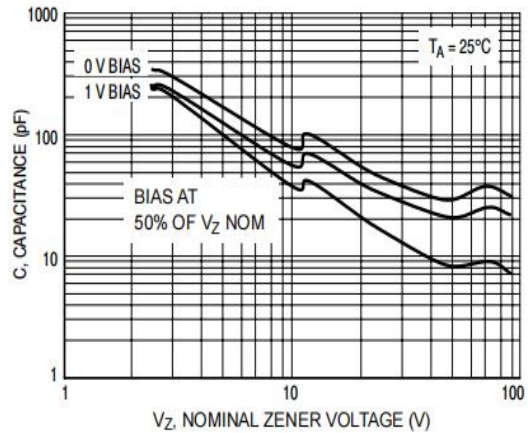


Figure 4: Capacitance Characteristics

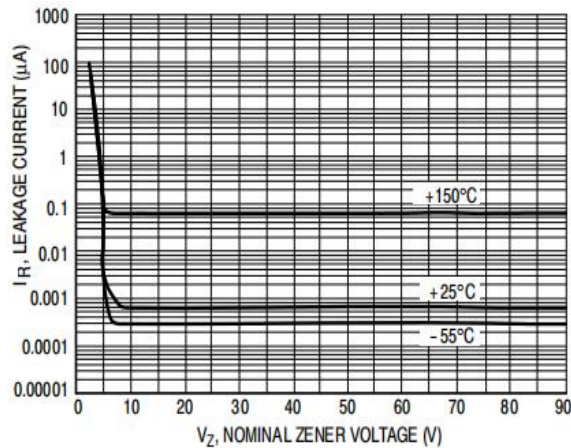
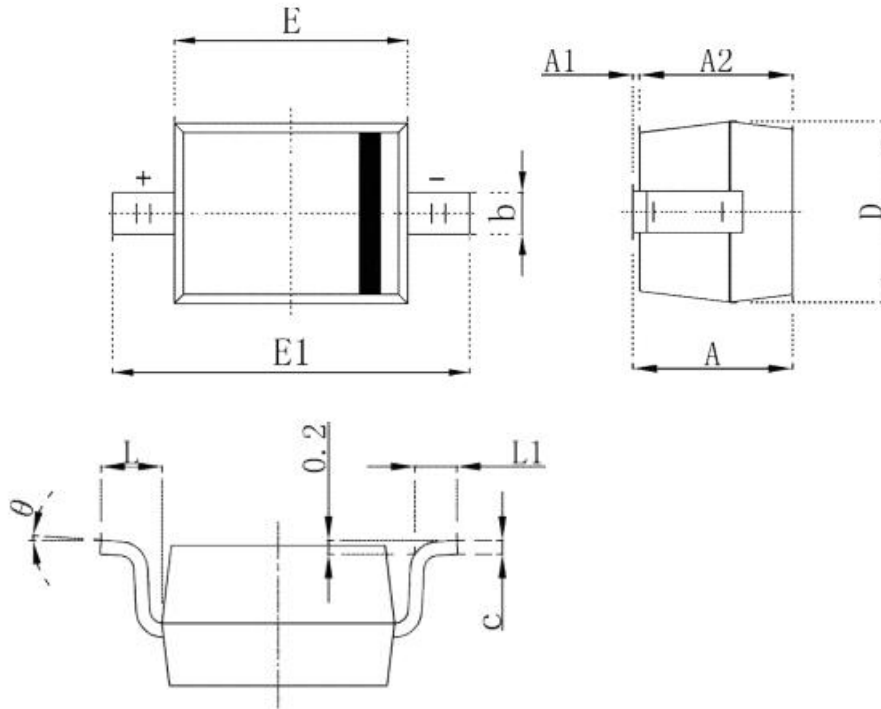


Figure 5: Leakage Current

■Dimension 外形封装尺寸



Symbol	Dimensions In Millimeters		Dimensions In Inches	
	Min.	Max.	Min.	Max.
A		1.000		0.039
A1	0.000	0.100	0.000	0.004
A2	0.800	0.900	0.031	0.035
b	0.250	0.350	0.010	0.014
c	0.080	0.150	0.003	0.006
D	1.200	1.400	0.047	0.055
E	1.600	1.800	0.063	0.071
E1	2.250	2.750	0.100	0.108
L	0.475 REF		0.019 REF	
L1	0.250	0.400	0.010	0.016
θ	0°	8°	0°	8°