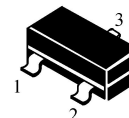


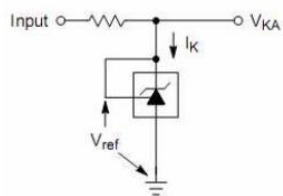
SOT-23 Three Terminal Adjustable Regulator 三端可调稳压 IC

SOT-23

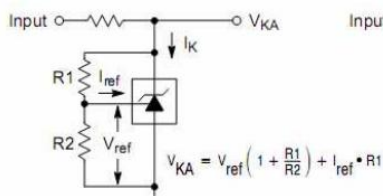
1. Reference
2. Cathode
3. Anode



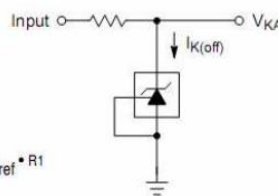
■ Features 特点



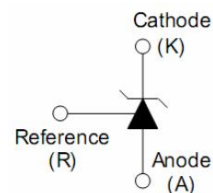
Test Circuit
for $V_{KA} = V_{ref}$



Test Circuit
for $V_{KA} > V_{ref}$



Test Circuit
for $I_{K(off)}$



Symbol

■ Absolute Maximum Ratings 最大额定值

($T_A=25^{\circ}\text{C}$ unless otherwise noted 如无特殊说明, 温度为 25°C)

Characteristic 特性参数	Symbol 符号	Rat 额定值	Unit 单位
Cathode to Anode Voltage 阴极到阳极电压	V_{KA}	40	V
Cathode Current Range 工作电流	I_K	-100~+150	mA
Reference Input Current Range 输入电流	I_{REF}	-0.05~+10	mA
Power dissipation 耗散功率	P_D	200	mW
Thermal Resistance Junction-Ambient 热阻	$R_{\theta JA}$	625	$^{\circ}\text{C}/\text{W}$
Solder Temperature 焊接温度/时间	T_d	260/10	$^{\circ}\text{C}/\text{S}$
Operating Ambient Temperature 工作温度	T_{op}	0~70	$^{\circ}\text{C}$
Junction and Storage Temperature 结温和储藏温度	T_J, T_{stg}	-40to+125 $^{\circ}\text{C}$	

■ Device Marking 产品打标

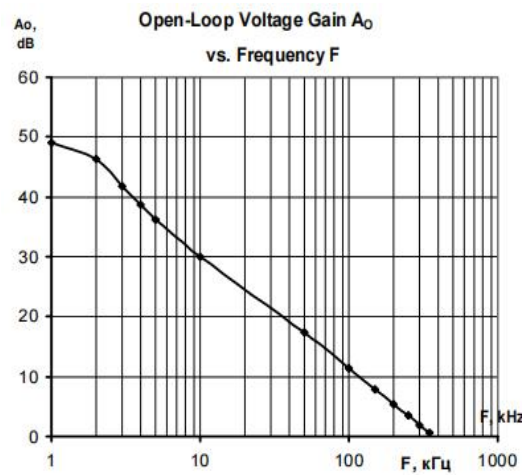
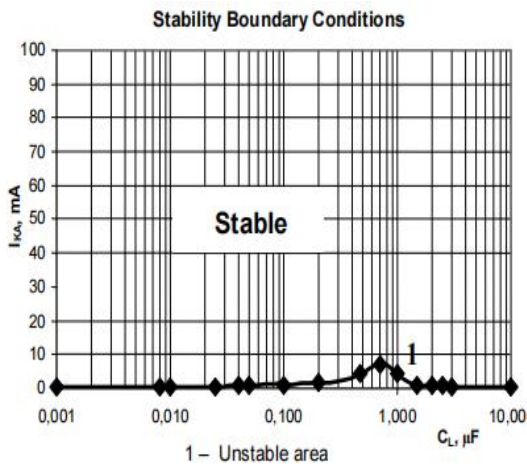
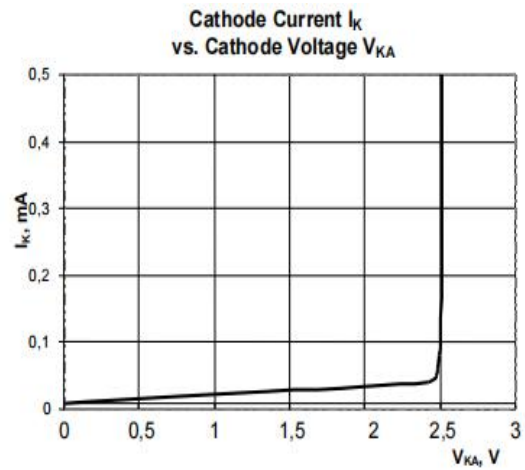
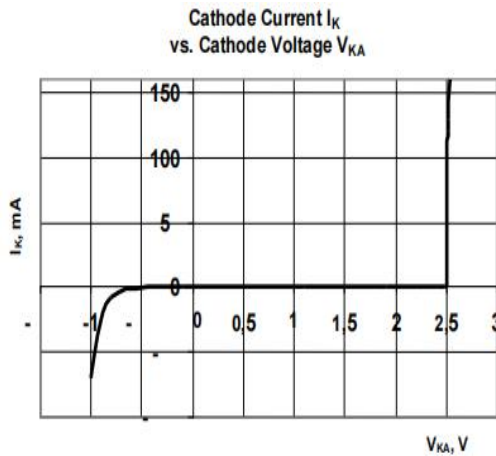
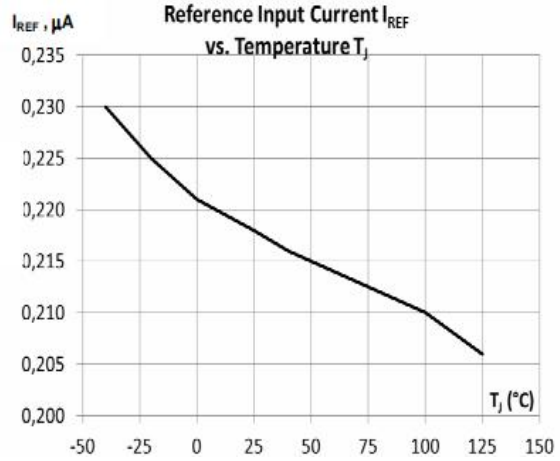
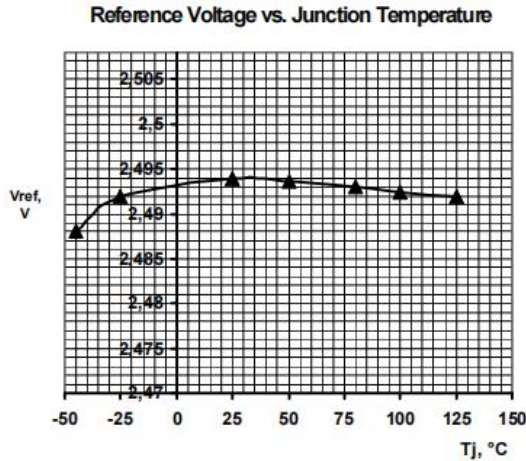
FS431S=431.

■ Electrical Characteristics 电特性

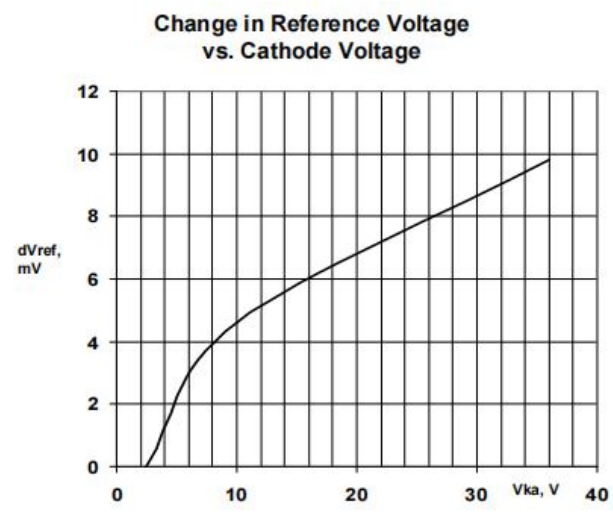
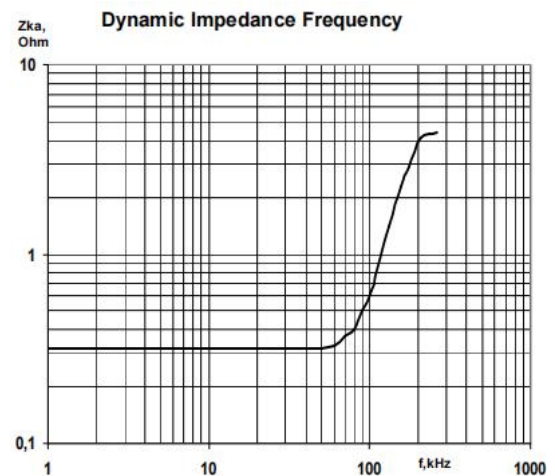
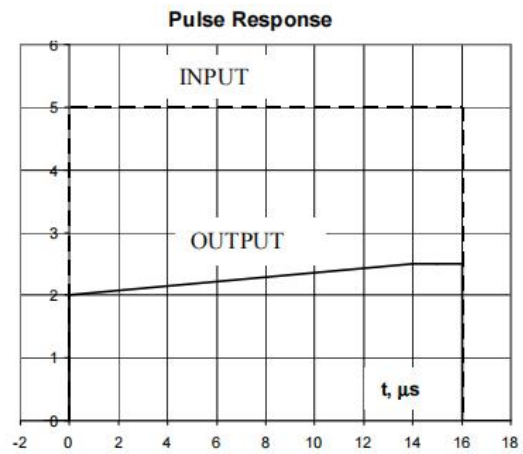
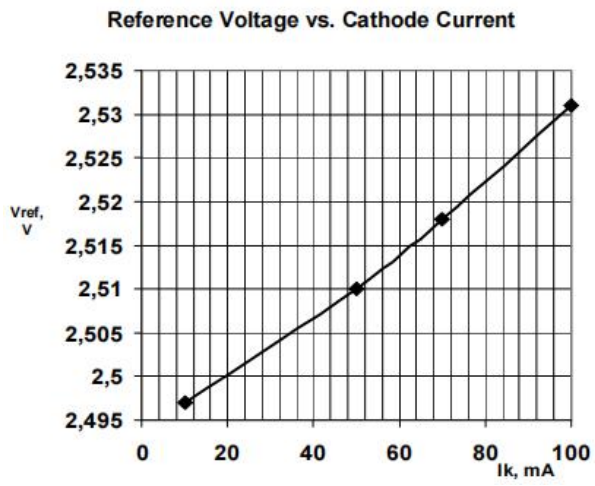
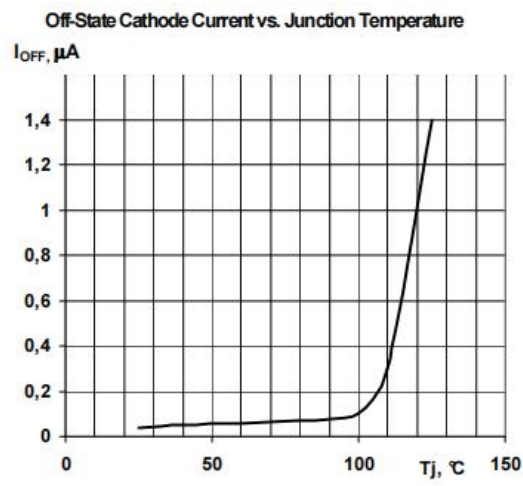
($V_{KA}=V_{REF}$ $I_{KA}=10mA$ $T_a=25^\circ C$ unless otherwise noted 如无特殊说明)

Characteristic 特性参数	Symbol 符号	Test Condition 测试条件	Min 最小值	Type 典型值	Max 最大值	Unit 单位
Reference Input Voltage 基准电压	V_{REF}	$V_{KA}=V_{REF}$ $I_{KA}=10mA$	2.483	2.495	2.507	V
			2.470	2.495	2.520	
			2.445	2.495	2.545	
Deviation of reference Input Voltage Over temperature 标准温度内基准电压偏差	$\Delta V_{REF}/\Delta T$	$V_{KA}=V_{REF}$ $I_{KA}=10mA$ $0 \sim 70^\circ C$		3	17	mV
Ratio of Change in Reference Input Voltage Change in Cathode Voltage 阴极电压与基准电压变化比	$\Delta V_{REF}/\Delta V_{KA}$	$I_{KA}=10mA$ $\Delta V_{KA}=10V \sim V_{REF}$ $\Delta V_{KA}=36V \sim 10V$	-0.4 -0.4	0.32 0.16	2.7 2.0	mV/V
Reference Input Current 基准电流	I_{REF}	$I_{KA}=10mA$ $R1=10k \Omega, R2=\infty$		0.22	4	μA
Deviation of Reference Input Current Over Full Temperature Range 标准温度内基准电流偏差	$\Delta I_{REF}/\Delta T$	$I_{KA}=10mA$ $R1=10k \Omega, R2=\infty$ $T_A=0 \sim 70^\circ C$		0.05	0.4	μA
Minimum Cathode Current for Regulation 最小阴极电流	$I_{KA(MIN)}$	$V_{KA}=V_{REF}$		0.05	0.1	mA
Off-state Cathode Current 关闭状态阴极电流	$I_{KA(OFF)}$	$V_{KA}=40V$ $V_{REF}=0V$		0.056	0.5	μA
Dynamic Impedance 输出阻抗	Z_{KA}	$V_{KA}=V_{REF}$ $I_{KA}=1 \sim 100mA$ $f \leq 1kHz$		0.32	0.5	Ω

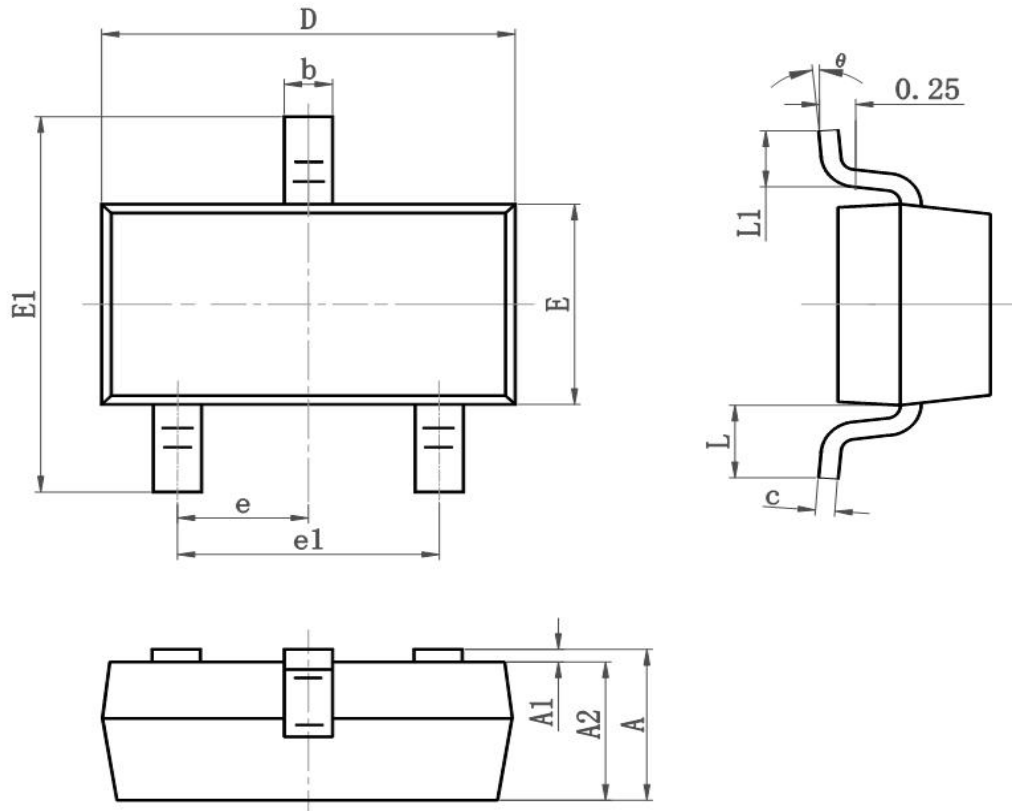
■ Typical Characteristic Curve 典型特性曲线



■ Typical Characteristic Curve 典型特性曲线



■SOT-23 Dimension 外形封装尺寸



Symbol	Dimensions In Millimeters		Dimensions In Inches	
	Min	Max	Min	Max
A	0.900	1.150	0.035	0.045
A1	0.000	0.100	0.000	0.004
A2	0.900	1.050	0.035	0.041
b	0.300	0.500	0.012	0.020
c	0.080	0.150	0.003	0.006
D	2.800	3.000	0.110	0.118
E	1.200	1.400	0.050	0.055
E1	2.250	2.550	0.089	0.100
e	0.900	1.00	0.035	0.039
e1	1.800	2.000	0.071	0.079
L	0.500	0.600	0.020	0.024
L1	0.300	0.500	0.012	0.020
θ	0°	8°	0°	8°