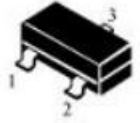


SOT-23 LDO 低落差稳压 IC

SOT-23

- 1. V<sub>SS</sub>
- 2. V<sub>out</sub>
- 3. V<sub>in</sub>



■ Absolute Maximum Ratings 最大额定值

(T<sub>A</sub>=25°C unless otherwise noted 如无特殊说明, 温度为 25°C)

Characteristic 特性参数	Symbol 符号	Rat 额定值	Unit 单位
Input Voltage 输入电压	V <sub>in</sub>	V <sub>out</sub> +0.3~V <sub>out</sub> +7	V
Operating Current 工作电流	I <sub>O</sub>	300	mA
Output Voltage 输出电压	V <sub>out</sub>	1.5、1.8、2.5、2.8、3、3.3、5	V
Power dissipation 耗散功率	P <sub>D</sub>	300	mW
Operating Temperature 工作温度	T <sub>A</sub>	-40~+85	°C
Storage Temperature 储藏温度	T <sub>stg</sub>	-55to+150°C	

■ Device Marking 产品字标

FS6206-1.5V=65E9

FS6206-1.8V=65K5

FS6206-2.5V=65T5

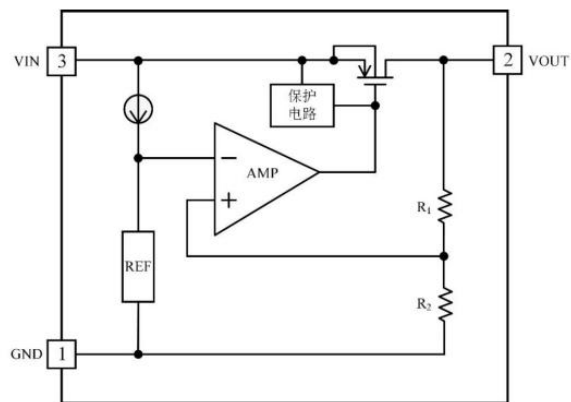
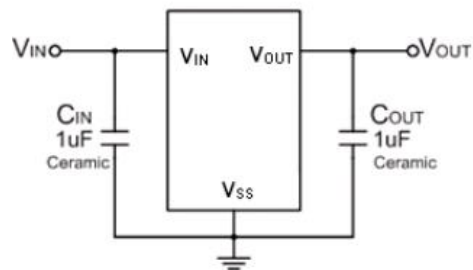
FS6206-2.8V=65X5

FS6206-3V=65Z5

FS6206-3.3V=662K

FS6206-5V=66MX

Circuit&Block 电路与框图



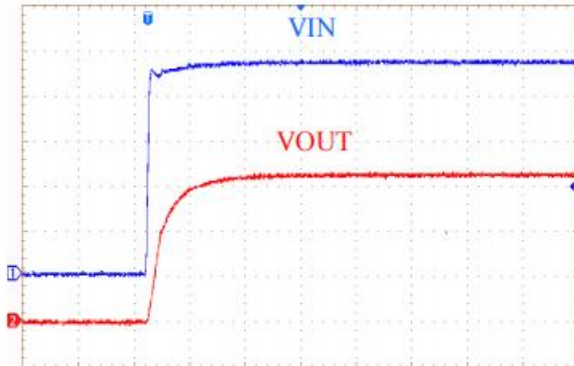
■ Electrical Characteristics 电特性

( $C_i=1\mu F$   $C_o=1\mu F$   $T_A=25^\circ C$  unless otherwise noted 如无特殊说明 )

Characteristic 特性参数	Symbol 符号	Test Condition 测试条件	Min 最小值	Type 典型值	Max 最大值	Unit 单位
Output Voltage 输出电压	$V_O$	$V_{in}=V_{out}+1V$ $I_O=10mA$	$V_{out(S)}$ $\times 0.98$	$V_{out(S)}$	$V_{out(S)}$ $\times 1.02$	V
Output Current 输出电流	$I_O$	$V_I=V_{out(S)}+1V$		100		mA
Dropout Voltage 落差电压	$V_D$	$I_O=100mA$		160	350	mV
Quiescent Current 静态电流	$I_q$	$V_I=V_{out(S)}+1V$		3.5	6.5	$\mu A$
Load Regulation 负载调整	$\Delta V_O$	$V_I=V_{out(S)}+1V$ $1mA \leq I_O \leq 80mA$		15	30	mV
Line Regulation 线性调整	$\Delta V_O$	$I_O=40mA$ $V_{out(S)}+1V \leq V_I \leq 6V$		0.05	0.2	%mV
Input Voltage 输入电压	$V_I$		$V_{out}+0.3$		$V_{out}+6$	V
Output Noise Voltage 噪声电压	$V_N$	$10Hz \leq f \leq 100kHz$		30		$\mu V$
Ripple Rejection 纹波抑制	RR	$V_I=V_{out(S)}+1V$ $f=1KHz, I_O=10mA$		50		dB

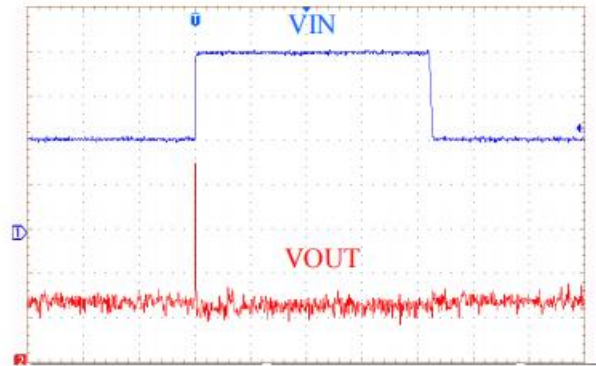
■ Typical Characteristic Curve 典型特性曲线

Power Up Response



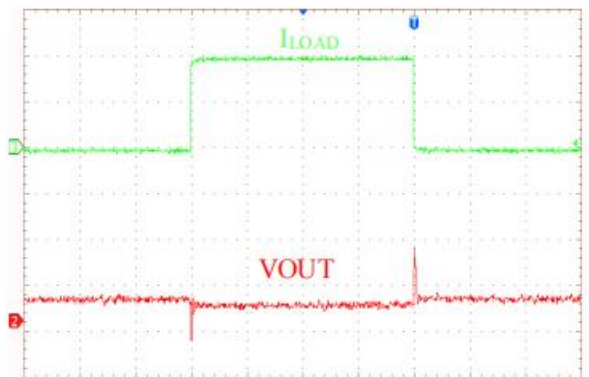
$V_{IN}=0V-5V$ ,  $C_{IN}=1\mu F$ ,  $C_{OUT}=1\mu F$ ,  $I_{LOAD}=20mA$   
CH1:  $V_{IN}$  (1V/DIV), CH2:  $V_{OUT}$  (1V/DIV)  
Time: 40 $\mu s$ /DIV

Line Transient Response



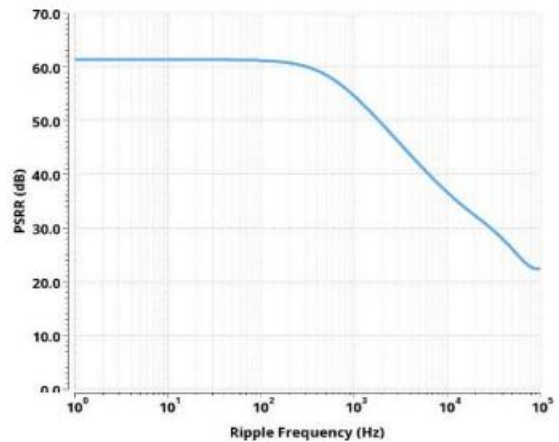
$V_{IN}=4V-6V$ ,  $C_{IN}=1\mu F$ ,  $C_{OUT}=1\mu F$ ,  $I_{LOAD}=20mA$   
CH1:  $V_{IN}$  (1V/DIV), CH2:  $V_{OUT}$  (20mV/DIV)  
Time: 2ms/DIV

Load Transient Response



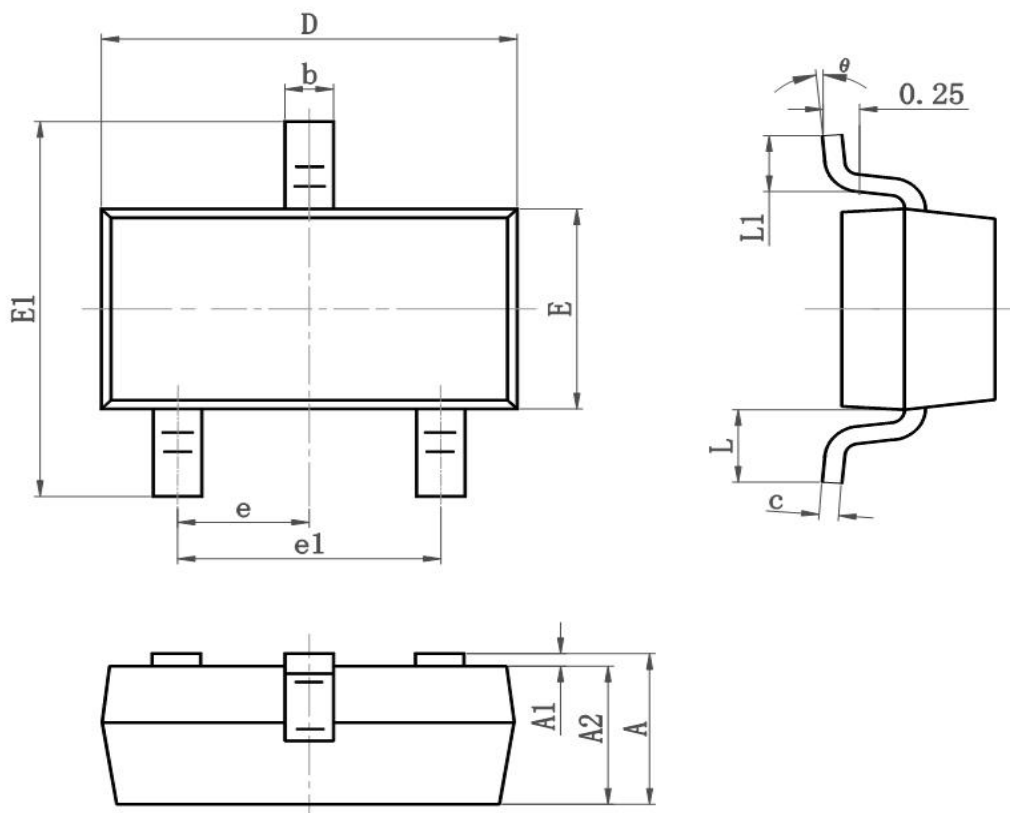
$V_{IN}=4.3V$ ,  $C_{IN}=1\mu F$ ,  $C_{OUT}=1\mu F$ ,  $I_{LOAD}=1m-100mA$   
CH2:  $V_{OUT}$  (100mV/DIV), CH3:  $I_{LOAD}$  (50mA/DIV)  
Time: 2ms/DIV

PSRR vs. Frequency



$V_{IN}=4.3V+1V_{p-p}$  AC,  $C_{OUT}=1\mu F$ ,  $I_{LOAD}=10mA$

■SOT-23 Dimension 外形封装尺寸



Symbol	Dimensions In Millimeters		Dimensions In Inches	
	Min	Max	Min	Max
A	0.900	1.150	0.035	0.045
A1	0.000	0.100	0.000	0.004
A2	0.900	1.050	0.035	0.041
b	0.300	0.500	0.012	0.020
c	0.080	0.150	0.003	0.006
D	2.800	3.000	0.110	0.118
E	1.200	1.400	0.050	0.055
E1	2.250	2.550	0.089	0.100
e	0.900	1.00	0.035	0.039
e1	1.800	2.000	0.071	0.079
L	0.500	0.600	0.020	0.024
L1	0.300	0.500	0.012	0.020
$\theta$	0°	8°	0°	8°