

SOT-23 Three Terminal Regulator 三端稳压 IC

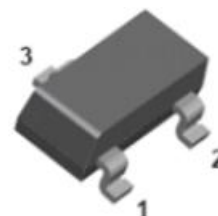
■Features 特点

Pin 脚位: 1.Output 输出 2.Input 输入 3.Ground 地

Output Voltage 输出电压: 5V

Output Current 输出电流: 0.1A

Power dissipation 耗散功率: 0.25W



■Absolute Maximum Ratings 最大额定值

($T_A=25^{\circ}\text{C}$ unless otherwise noted 如无特殊说明, 温度为 25°C)

Characteristic 特性参数	Symbol 符号	Rat 额定值	Unit 单位
Input Voltage 输入电压	V_i	35	V
Operating Current 工作电流	I_o	100	mA
Power dissipation 耗散功率	P_D	250	mW
Thermal Resistance Junction-Ambient 热阻	$R_{\theta JA}$	500	$^{\circ}\text{C}/\text{W}$
Solder Temperature 焊接温度/时间	T_d	260	$^{\circ}\text{C}$
Solder Temperature/Time 焊接时间	T_d	10	S
Operating Ambient Temperature 工作温度	T_A	-40~+125	$^{\circ}\text{C}$
Junction and Storage Temperature 结温和储藏温度	T_J, T_{stg}	-55to+150 $^{\circ}\text{C}$	

■Device Marking 产品字标

FSS78L05M=L05

■ Electrical Characteristics 电特性

($V_I=10V$ $I_O=40mA$ $C_i=0.33\mu F$ $C_o=0.1\mu F$ $T_A=25^\circ C$ unless otherwise noted 如无特殊说明)

Characteristic 特性参数	Symbol 符号	Test Condition 测试条件	Min 最小值	Type 典型值	Max 最大值	Unit 单位
Output Voltage 输出电压	V_O	$V_I=10V$ $I_O=40mA$	4.95	5	5.05	V
			4.8	5	5.2	
Output Voltage 输出电压	V_O	$7V \leq V_I \leq 20V$ $1mA \leq I_O \leq 40mA$	4.75		5.25	V
Output Voltage 输出电压	V_O	$7V \leq V_I \leq 20V$ $1mA \leq I_O \leq 100mA$	4.75		5.25	V
Output Current 输出电流	I_O	$V_I=10V$		100		mA
Dropout Voltage 落差电压	V_D	$I_O=40mA$		1.7		V
Quiescent Current 静态电流	I_q	$V_I=10V$ $I_O=0$		3.8	6	mA
Quiescent Current Change 静态电流变化	ΔI_q	$8V \leq V_I \leq 20V$			1.5	mA
Quiescent Current Change 静态电流变化	ΔI_q	$1mA \leq I_O \leq 40mA$			0.1	mA
Line Regulation 线性调整	ΔV_O	$I_O=40mA$ $7V \leq V_I \leq 20V$		32	150	mV
Line Regulation 线性调整	ΔV_O	$I_O=40mA$ $8V \leq V_I \leq 20V$		20	100	mV
Load Regulation 负载调整	ΔV_O	$1mA \leq I_O \leq 100mA$ $V_I=10V$		15	60	mV
Load Regulation 负载调整	ΔV_O	$1mA \leq I_O \leq 40mA$ $V_I=10V$		8	30	mV
Output Noise Voltage 噪声电压	V_N	$10Hz \leq f \leq 100kHz$		42		μV
Ripple Rejection 纹波抑制	RR	$8V \leq V_I \leq 20V$ $f=120Hz$	41	49		dB

■ Typical Characteristic Curve 典型特性曲线

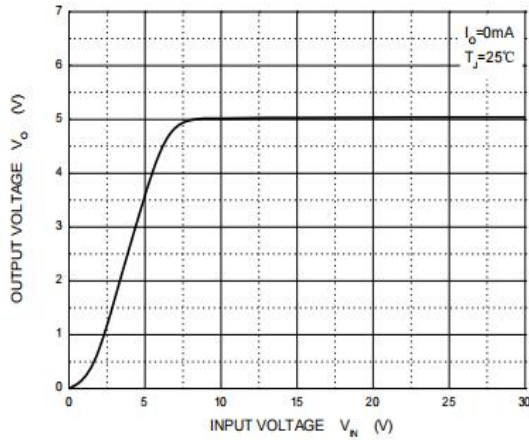


Figure 1: Transfer Characteristics

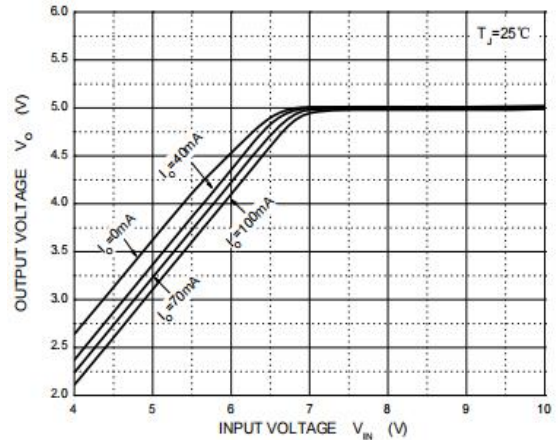


Figure 2: Dropout Characteristics

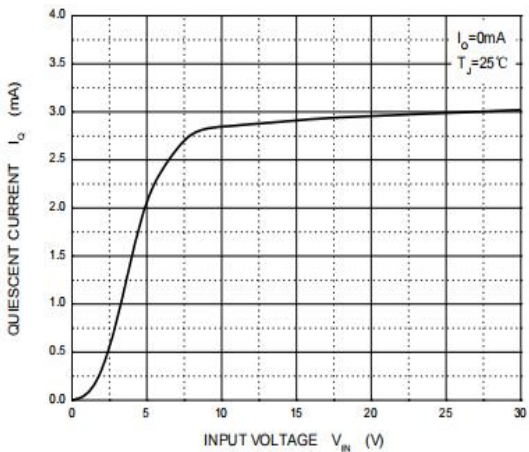


Figure 3: Quiescent Current Characteristics

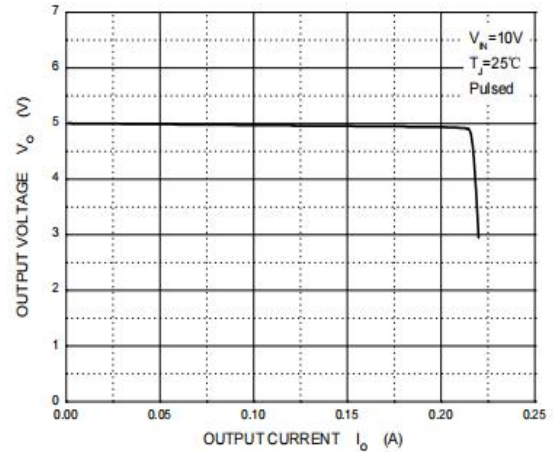


Figure 4: Output Characteristics

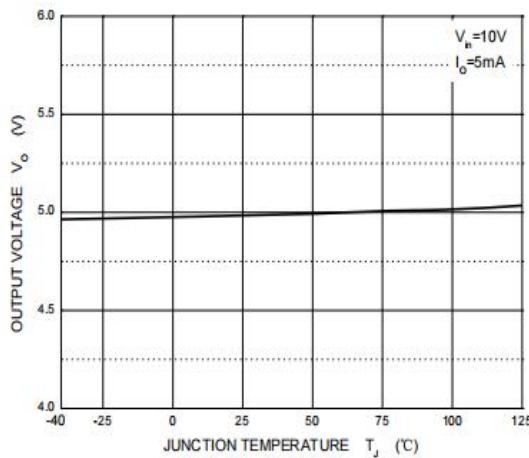


Figure 5: Temperature Characteristics

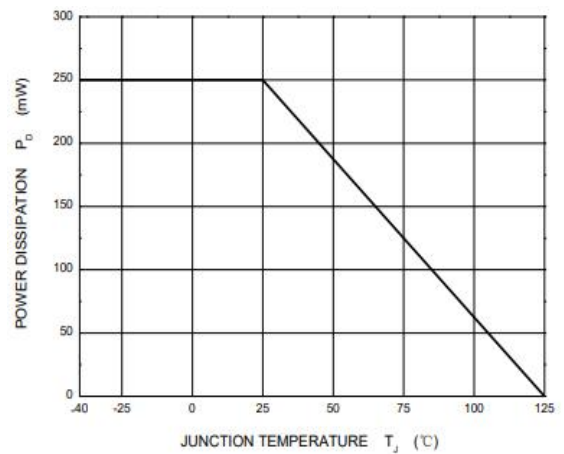
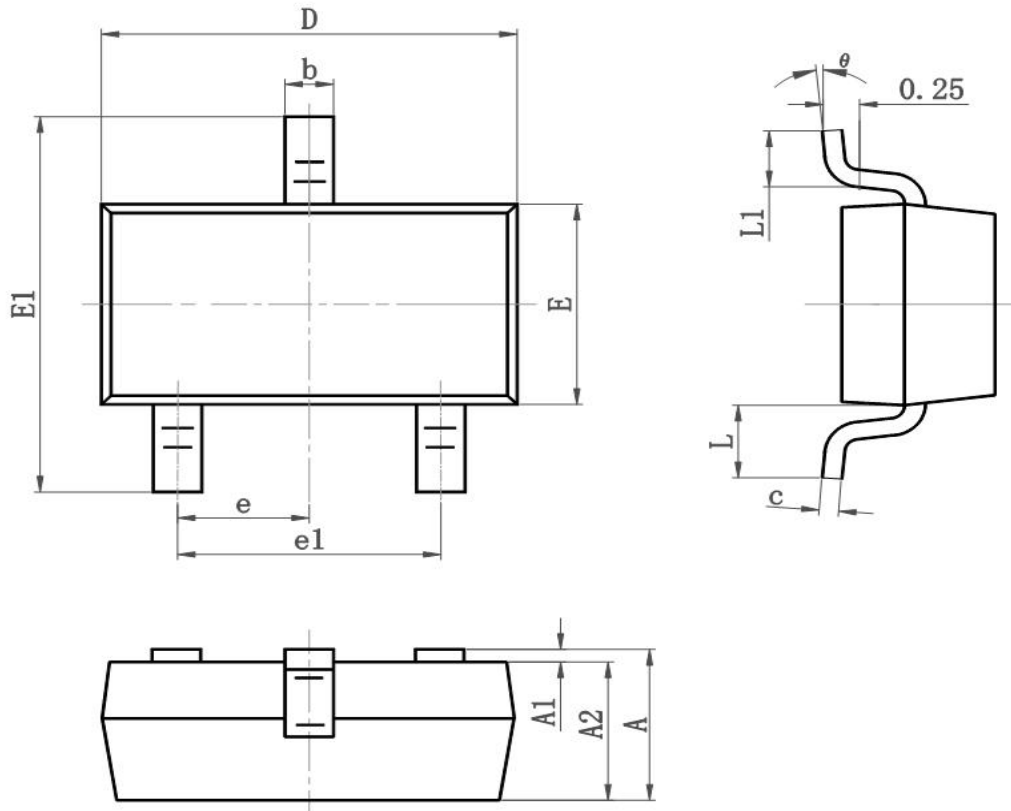


Figure 6: Power Characteristics

■SOT-23 Dimension 外形封装尺寸



Symbol	Dimensions In Millimeters		Dimensions In Inches	
	Min	Max	Min	Max
A	0.900	1.150	0.035	0.045
A1	0.000	0.100	0.000	0.004
A2	0.900	1.050	0.035	0.041
b	0.300	0.500	0.012	0.020
c	0.080	0.150	0.003	0.006
D	2.800	3.000	0.110	0.118
E	1.200	1.400	0.050	0.055
E1	2.250	2.550	0.089	0.100
e	0.900	1.00	0.035	0.039
e1	1.800	2.000	0.071	0.079
L	0.500	0.600	0.020	0.024
L1	0.300	0.500	0.012	0.020
θ	0°	8°	0°	8°